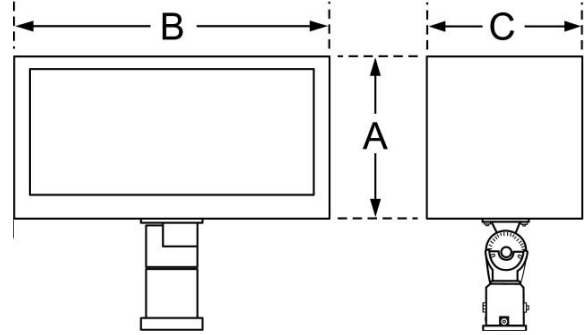


Project Name	Type
Catalog Number	

# Smart Flood - Rectangular



## Dimensional Drawings



Fixture	A	B	C	Max. Watts	Lbs
SFR-1	7¾"	14¾"	13.4"	400w	40

The **SmartFlood** family of luminaires are designed and constructed for superior durability, high performance, economical operation, and aesthetic appearance. The rugged housings and choice of adjustable knuckle or trunion bracket offer versatility for a wide range of lighting applications. A Wide Flood distribution pattern is standard.

Models are available for floodlighting, accent, security, building façade, landscape, and general area lighting.

**SmartFlood's** proven performance, excellent light control and wide selection of light sources from 70 through 400 watts make it the "smart" choice for a variety of lighting tasks.

Model	Optics	Wattage	Source	Voltage	Mounting	Finish	Options
SFR-1	Wide Flood (WF)	70 (70)	PS, HPS	120	Knuckle Mount (KM)	Bronze (BZ)	Buttontype Photocell <small>*Specify voltage</small> (PC120) (PC208) (PC240) (PC277)
		100 (100)	PS, HPS	(1)		Black (BK)	
		150 (150)	PS, HPS	208	Trunion Mount (TM)	White (WH)	Quartz Restrike (QR)
		250 (250)	PS, HPS	(2)		Forest Green (GN)	
		320 (320)	PS	240		Grey (GY)	
		400 (400)	PS, HPS (P) (S)	277	Wall Mount (WM)	Silver Metallic (SL)	Fusing <small>*Specify voltage</small> Single in-line fuse (SF120) (SF277) Double in-line fuse (DF208) (DF240) (DF480)
				480		Custom Color (CC)	
						M-Tap (6)	
				<small>*Multi-Tap ballast wired at 277v unless specified</small>			
				347			
				(8)			

PS - Pulse Start Metal Halide  
HPS - High Pressure Sodium

Lighting, LLC. Any use of this information requires the written approval of Visionaire Lighting, LLC. In keeping with our TQM policy of continuous improvement, Visionaire reserves the right to change any specifications contained herein without prior notice.

# Smart Flood - Rectangular

## Housings

- SFR-1 utilizes a rugged, one piece die-cast, soft corner aluminum housing with stylish accents.
- All hardware is rust resistant stainless steel.

## Lens and Door Assembly

- Die-cast external hinged door frame. A silicone gasket seals the door frame against the housing.
- The lens is a clear tempered flat glass, completely enclosed and gasketed for a weathertight seal.

## Optical System

- The SFR-1 reflector is precision CNC cut and bent, highly efficient, reflective aluminum, and available in a wide flood distribution.

## Quali-Guard® Finish

- The finish is a Quali-Guard® textured, chemically pretreated through a multiple stage washer, electrostatically applied, thermoset polyester powder coat finish, with a minimum of 3-5 millimeter thickness. Finish is oven baked at 400 degrees Fahrenheit to promote maximum adherence and finish hardness. All finishes are available in standard and custom colors.
- Finish is guaranteed for two (2) years.

## Mounting & Aiming

- The SmartFlood-1 is available with either a die-cast aluminum, adjustable knuckle, designed to slip over 2 $\frac{3}{8}$  inch pipe, or an adjustable trunnion "U" bracket, with stainless steel hardware. Knuckles and trunnion brackets are pre-mounted to fixtures by Visionaire.

## Electrical Assembly


- All ballasts are premium grade CWA or HPF regulating auto transformers, available in Pulse Start and High Pressure Sodium. Ballast is capable of providing consistent lamp starting down to -20 degrees Fahrenheit.
- Socket is glazed porcelain medium or mogul base with nickel plated contacts, rated at 4KV and 600V.

## Options

- Button photocell
- Quartz restrike
- Fusing

Please consult factory for custom options.

## Listings

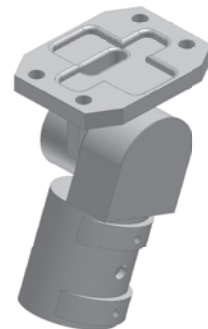
- Smart Flood is  listed, suitable for wet locations.

### Adjustable Trunnion




For horizontal surface or wall mounting

### Adjustable Knuckle



Slip fits over 2" - 3" O.D.

### EPA Data

Fixture with Arm	
SFR-1	1.5