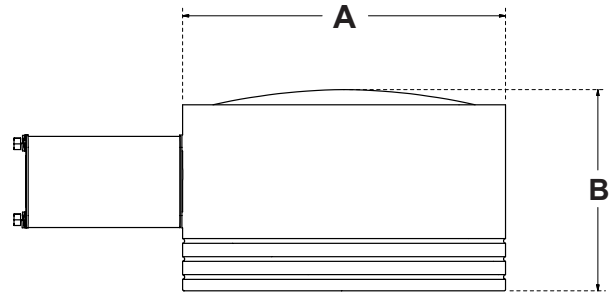


Concourse INDUCTION

Project Name	Type
Catalog Number	



Dimensional Drawings



Fixture	A	B	Max. Watts	Lbs
CON-1-I	20¼"	13¼"	100 W	45
CON-2-I	25¼"	15¼"	165 W	60

The **Concourse** series features the most advanced lighting reflector system available today. Vision™ is a patented, revolutionary new reflector system unlike any other. The flat lens, vertical lamp, IES full cutoff luminaire is certified by the International Dark-Sky Association to restrict light trespass, glare and light pollution for neighborhood-friendly outdoor lighting (convex glass lens is available when required).

The **Concourse** series is offered in two enclosure sizes and two distribution patterns. The Vision™ Reflector System allows for the use of fewer fixtures and poles with wider spacing providing substantial equipment, installation and energy cost savings.

The housing features a smoothly contoured dome top and three decorative circular reveals to accent the shape. Computerized precision machinery and quality materials ensure manufacturing to the highest industry standards.

The **Concourse** is an excellent choice for shopping centers, parking lots and general area lighting. A wide selection of light sources from 55 watts thru 165 watts are available.

Model	Optics	Wattage	Source	Kelvin	Voltage	Mounting	Finish/Stripe	Options
CON-1-I	Type III (T3) 	Globes	IND (IND)	3000K (3K)	120 (1)	Bolt-On Arm 6" (BOA6)	Bronze (BZ)	<u>Photocell & Receptacle</u> *Specify voltage (PCR120) (PCR208) (PCR240) (PCR277) Photo Receptacle (PER) *With shunting cap <u>Button Type Photocell</u> *Specify voltage (PC120) (PC208) (PC240) (PC277) <u>Fusing</u> *Specify voltage Single in-line fuse (SF120) (SF277) Double in-line fuse (DF208) (DF240) House Side Light Shield (LS) Internal Light Shield (ILS) Round Pole Plate Adaptor (RPP) Cast Wall Plate (BAWP)
		55G (55G)		5000K (5K)	208 (2)	Bolt-On Arm 10" (BOA10)	Black (BK)	
	Type V (T5) 	85G (85G)		240 (3)	Spider Mount *Fits 2½" O.D. (SM)	White (WH)		
	165G (165G) *Size 2 only		277 (4)	Wall Mount *Cast Wall Plate (BAWP) to be ordered separately (WM)	Forest Green (FG)			
CON-2-I		<u>Tubes</u>			480 *Includes step-down transformer (5)	Mast Arm (MA)	Grey (GY)	
		70T (70T)			347 *Includes step-down transformer (8)		Silver Metallic (SL)	
		100T (100T)					Custom Color (CC)	
		150T (150T) *Size 2 only						

Unless specified, a BOA6 will be supplied for S1 and D180 mounting. BAO10 is supplied for all other configurations.

Round Pole Plate Adaptors (RPP) are to be ordered separately.

IND-Induction

For more detailed information on mounting, wiring or installation instructions, please consult factory. If poles are not ordered with fixtures, please specify mounting requirements. This document contains proprietary information of Visionaire Lighting, LLC. Any use of this information requires the written approval of Visionaire Lighting, LLC. In keeping with our TQM policy of continuous improvement, Visionaire reserves the right to change any specifications contained herein without prior notice.



19645 Rancho Way • Rancho Dominguez, CA • 90220
 Tel: (310) 512-6480 • Fax: (310) 512-6486
 www.visionairelighting.com

Housing

• All housings are one-piece spun aluminum, designed and engineered for a weather-tight seal. **Concourse** housings display a decorative external reveal to give the luminaires a distinct appearance. All external hardware is stainless steel.

Lens and Door Assembly

• Door assembly is precision spun, one-piece, corrosion-resistant aluminum with captive stainless steel fasteners.
• The standard lens is a clear, tempered flat glass, secured by galvanized lens retainers, and sealed with silicone gasketing to provide complete weather and insect protection.

Vision™ Optical System

• Reflector is precision CNC cut and bent, multifaceted, segmented, highly efficient, 95% reflective aluminum. Available in two distribution patterns.
• Tool-less reflector entry.

Quali-Guard® Finish

• The finish is Quali-Guard® textured, chemically pretreated through a multiple stage washer, electrostatically applied, thermoset polyester powder coat finish, with a minimum of 3-5 millimeter thickness. Finish is oven-baked at 400 °F to promote maximum adherence and finish hardness. All finishes are available in standard and custom colors.
• Finish is guaranteed for two (2) years.

Mounting

• A rounded extruded aluminum, Bolt-On Arm (BOA), with an in-pole nut plate, securing two half-inch zinc running bolts with stainless steel hardware is standard. A Round Pole Plate Adaptor (RPP) is required for mounting to 3" through 5" round poles.

Electrical Assembly



• The **Concourse** is supplied with a high-efficiency, electronic generator that operates at 120 through 277 volts, 50 to 60 Hz, and is rated for -20 °C operation.

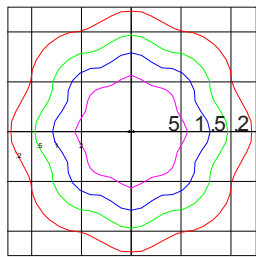
Options

- Photocell & receptacle
- Photo receptacle
- Button type photocell
- Fusing
- House side light shield
- Internal light shield
- Round pole plate adaptor
- Cast wall plate

Please consult factory for custom options.

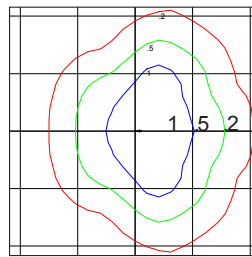
Listings

- **Concourse** is  listed, suitable for wet locations.
- Dark-Sky Friendly®, full cutoff certified by the International Dark-Sky Association.
- Powder Coated Tough™ 
- Vision™ Reflector System (U.S. Patent No. 7,213,948).



CONCONOURSE-2-I ISOLUX CURVE
TYPE V
INDUCTION OPTICS
165 WATTS

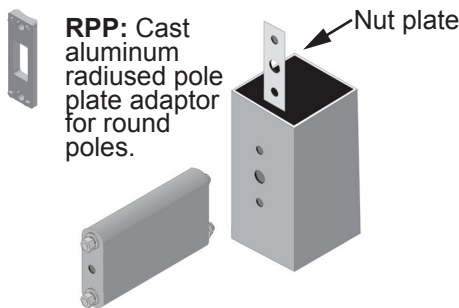
Scale: 1 Square = 28 ft
Light Loss Factor = 1.00
Mounting Height = 28 ft
Arrangement: Single



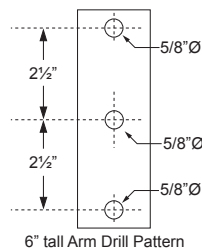
CONCONOURSE-2-I ISOLUX CURVE
TYPE III
INDUCTION OPTICS
165 WATTS

Scale: 1 Square = 28 ft
Light Loss Factor = 1.00
Mounting Height = 28 ft
Arrangement: Single

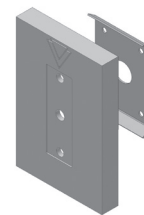
Bolt-On Arm Detail



CON-1-I & CON-2-I: 6" or 10" long x 6" tall x 2" wide



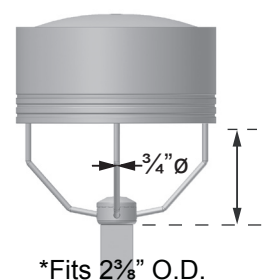
Cast Wall Plate



*For use with standard Bolt-On Arm








BAWP: 10" tall x 6 1/2" wide

Spider Mount Detail



CON-1-I: 8.89" tall
CON-2-I: 11.5" tall

EPA Data

Fixture with Arm							
CON-1-I	2.4	4.3	4.8	6.5	5.3	7.7	2.6
CON-2-I	3.2	5.8	6.4	8.6	7.4	10.2	3.5