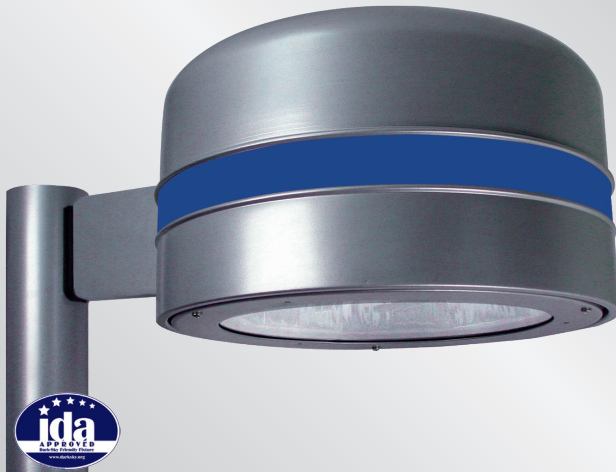
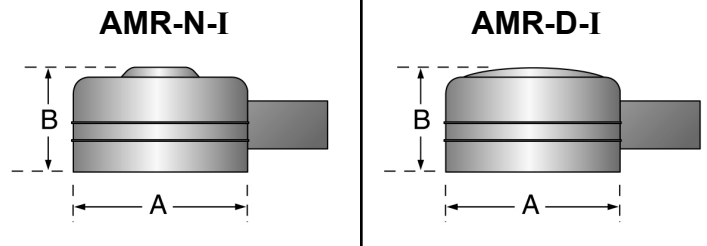


American Round INDUCTION

Project Name	Type
Catalog Number	



Dimensional Drawings



Fixture	A	B	Stripe	Max. Watts	Lbs
AMR-N1-I	22"	13¼"	2"	100 W	50
AMR-N2-I	26"	15¼"	2"	165 W	70
AMR-D1-I	22"	13¼"	2"	100 W	50
AMR-D2-I	26"	15¼"	2"	165 W	70

The **American Round** series features the most advanced lighting reflector system available today. Vision™ is a patented, revolutionary reflector system unlike any other. The flat lens, vertical lamp, IES full cutoff luminaire is Dark-Sky certified to restrict light trespass, glare and light pollution for neighborhood-friendly outdoor lighting.

The housing features soft rounded contours with two low-profile styles. A decorative reveal accents the shape with complementary or contrasting colors. Computerized precision machinery and quality materials ensure manufacturing to the highest industry standards.

American Round is offered in two enclosure styles and two distribution patterns. Vision™ Reflector System allows the use of fewer fixtures and poles with wider spacings, providing substantial equipment, installation and energy cost savings.

American Round is a proven performer for shopping centers, parking lots and general area lighting.

Model	Optics	Wattage	Source	Kelvin	Voltage	Mounting	Finish/Stripe	Options
AMR-N1-I	Type III (T3)	Globes 55G (55G)	IND (IND)	3000K (3K)	120 (1)	Bolt-On Arm 6" (BOA6)	Bronze (BZ)	Photocell & Receptacle <small>*Specify voltage</small> (PCR120) (PCR208) (PCR240) (PCR277)
AMR-D1-I	Type V (T5)	85G (85G) 165G (165G) <small>*Size N2/D2 only</small>		5000K (5K)	208 (2) 240 (3) 277 (4)	Bolt-On Arm 10" (BOA10) Spider Mount <small>*Fits 2¼ O.D.</small> (SM) Wall Mount <small>*Cast Wall Plate (BAWP) to be ordered separately</small> (WM)	Black (BK) White (WH) Forest Green (FG) Grey (GY) Silver Metallic (SL) Custom Color (CC)	Photo Receptacle (PER) <small>*With shorting cap</small> Button Type Photocell <small>*Specify voltage</small> (PC120) (PC208) (PC240) (PC277) Fusing <small>*Specify voltage Single in-line fuse</small> (SF120) (SF277) <small>Double in-line fuse</small> (DF208) (DF240) House Side Light Shield (LS) Internal Light Shield (ILS) Round Pole Plate Adaptor (RPP) Cast Wall Plate (BAWP)
AMR-N2-I		Tubes 70T (70T) 100T (100T) 150T (150T)			480 <small>*Includes step-down transformer</small> (5) 347 <small>*Includes step-down transformer</small> (8)			
AMR-D2-I							Stripe Color Blue Metallic (94) Red Opaque (188) Silver Metallic (58) Gold Metallic (41) White Opaque (50) Black Metallic (60) Charcoal Metallic (20)	

IND - Induction

Unless specified, a BOA6 will be supplied for S1 and D180 mounting. BOA10 is supplied for all other configurations.

Round Pole Plate Adaptors (RPP) are to be ordered separately.

For more detailed information on mounting, wiring or installation instructions, please consult factory. If poles are not ordered with fixtures, please specify mounting requirements. This document contains proprietary information of Visionaire Lighting, LLC. Any use of this information requires the written approval of Visionaire Lighting, LLC. In keeping with our TQM policy of continuous improvement, Visionaire reserves the right to change any specifications contained herein without prior notice.



19645 Rancho Way • Rancho Dominguez, CA • 90220
Tel: (310) 512-6480 • Fax: (310) 512-6486
www.visionairelighting.com

Housing

- All housings are one-piece spun aluminum, designed and engineered for a weather-tight seal. **American Round** housings display a decorative external reveal to give the luminaires a distinct appearance. All external hardware is stainless steel.
- State-of-the-art heat sink keeps system running cool and ensures a product life of 100,000 hours.

Lens and Door Assembly

- Door assembly is precision spun, one-piece, corrosion-resistant aluminum, with captive stainless steel fasteners.
- The standard lens is a clear, tempered flat glass, secured by galvanized lens retainers, and sealed with silicone gasketing to provide complete weather and insect protection.

Vision™ Optical System

- Reflector is precision CNC cut and bent, multifaceted, segmented, highly efficient, 95% reflective aluminum. Available in two distribution patterns.
- Tool-less reflector entry.

Quali-Guard® Finish

- The finish is Quali-Guard® textured, chemically pretreated through a multiple stage washer, electrostatically applied, thermoset polyester powder coat finish, with a minimum of 3-5 millimeter thickness. Finish is oven-baked at 400 °F to promote maximum adherence and finish hardness. All finishes are available in standard and custom colors.
- Finish is guaranteed for two (2) years.

Mounting

- A rounded extruded aluminum, Bolt-On Arm (BOA), with an in-pole nut plate, securing two half-inch zinc running bolts, with stainless steel hardware is standard. A Round Pole Plate Adaptor (RPP) is required for mounting to 3" or 5" round poles.

Electrical Assembly

- The **American Round** is supplied with a high-efficiency, electronic generator that operates at 120 through 277 volts, 50 to 60 Hz, and is rated for -20 °C operation.

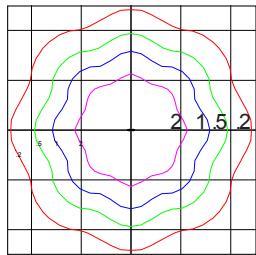
Options

- Photocell & receptacle
- Photo receptacle
- Button type photocell
- Fusing
- House side light shield
- Internal light shield
- Round pole plate adaptor
- Cast wall plate
- Color stripe

Please consult factory for custom options.

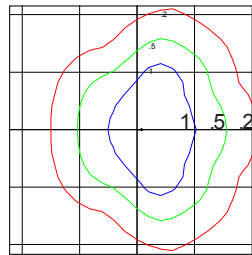
Listings

- **American Round** is  listed, suitable for wet locations.
- Dark-Sky Friendly®, full cutoff certified by the International Dark-Sky Association.
- Powder Coated Tough™ 
- Vision™ Reflector System (U.S. Patent No. 7,213,948).



AMERICAN ROUND-2-I ISOLUX CURVE
TYPE V
INDUCTION OPTICS
165 WATTS

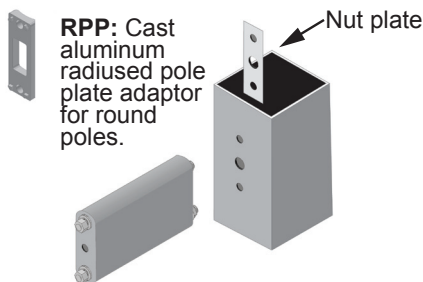
Scale: 1 Square = 28 ft
Initial Light Loss Factor = 1.00
Mounting Height = 28 ft
Arrangement: Single



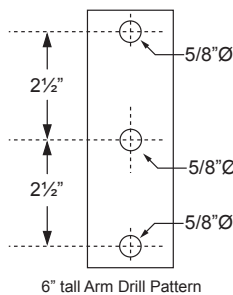
AMERICAN ROUND-2-I ISOLUX CURVE
TYPE III
INDUCTION OPTICS
165 WATTS

Scale: 1 Square = 28 ft
Initial Light Loss Factor = 1.00
Mounting Height = 28 ft
Arrangement: Single

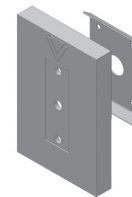
Bolt-On Arm Detail



AMR: 6" or 10" long x 6" tall x 2" wide



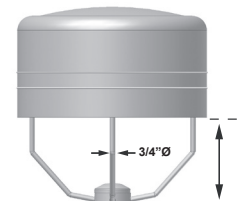
Cast Wall Plate



*For use with standard Bolt-On Arm








BAWP: 10" tall x 6 1/2" wide

Spider Mount Detail



AMR-N1-I/D1-I: 8.89" tall
AME-N2-I/D2-I: 11.5" tall

EPA Data

Fixture with Arm							
AMR-N1-I	2.2	4.0	4.4	6.0	5.1	7.1	2.4
AMR-N2-I	2.9	5.2	5.8	7.8	6.7	9.3	3.1
AMR-D1-I	2.2	4.0	4.4	6.0	5.1	7.1	2.4
AMR-D2-I	2.9	5.2	5.8	7.8	6.7	9.3	3.1