

Housing

- All housings are manufactured using technologically advanced computerized numerical control (CNC) machinery. Precision sheared and formed from one-piece, corrosion-resistant aluminum, with tooled external reveal.
- The computerized CNC machinery enables all **American** housings to be constructed quickly, efficiently and adhering to exacting ISO 9002 standards. All external hardware is stainless steel.
- State-of-the-art heat sink keeps system running cool and insures a product life of up to 100,000 hours.

Lens and Door Assembly

- Removable hinged door assembly is CNC precision, sheared and formed from one-piece, corrosion-resistant aluminum with captive stainless steel fasteners.
- The standard lens is a clear, tempered flat glass, secured by galvanized lens retainers and sealed with silicone gasketing to provide complete weather and insect protection.
- An optional convex glass lens is available for **AME-2-I**.

Vision™ Optical System

- The Vision™ Reflector System is made of precision CNC cut and bent, multifaceted, segmented, highly efficient, 95% reflective aluminum. Available in two distribution patterns.
- Tool-less reflector entry.

Quali-Guard® Finish

- The finish is Quali-Guard® textured, chemically pre-treated through a multiple stage washer, electrostatically applied, thermoset polyester powder coat finish, with a minimum of 3-5 millimeter thickness. Finish is oven-baked at 400 °F to promote maximum adherence and finish hardness. All finishes are available in standard and custom colors.
- Finish is guaranteed for two (2) years.

Mounting

- A rounded extruded aluminum, Bolt-On Arm (BOA), with an in-pole nut plate, securing (2) ½ inch zinc running bolts with stainless steel hardware is standard. A Round Pole Plate Adaptor (RPP) is required for mounting to 3" - 5" round poles.

Electrical Assembly

- The **American** is supplied with a high-efficiency, electronic generator that operates at 120 through 277 volts, 50 to 60 Hz, and is rated for -20 °C operation.

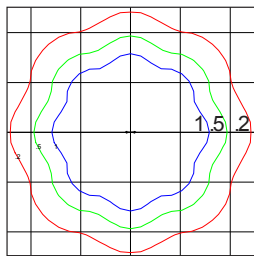
Options

- Photocell & receptacle
- Photo receptacle
- Button type photocell
- Fusing
- House side light shield
- Convex glass lens
- Internal light shield
- Round pole plate adaptor
- Cast wall plate
- Color stripe

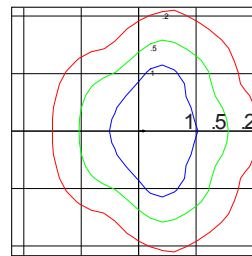
Please consult factory for custom options.

Listings

- The **American** is  listed, suitable for wet locations.
- Dark-Sky Friendly®, full cutoff certified by the International Dark-Sky Association (*flat lens models only*).
- Powder Coated Tough™ 
- Vision™ Reflector System (U.S. Patent No. 7,213,948).

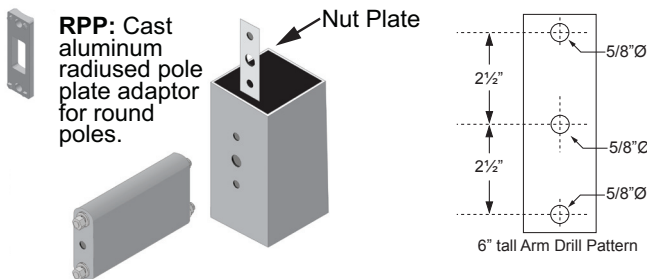


AMERICAN-2-I ISOLUX CURVE
TYPE V
INDUCTION OPTICS
165 WATTS
Scale: 1 Square = 28 ft
Initial Light Loss Factor = 1.00
Mounting Height = 28 ft
Arrangement: Twin (Back-to-back)



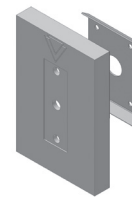
AMERICAN-2-I ISOLUX CURVE
TYPE III
INDUCTION OPTICS
165 WATTS
Scale: 1 Square = 28 ft
Initial Light Loss Factor = 1.00
Mounting Height = 28 ft
Arrangement: Single

Bolt-On Arm Detail



AME-2-I & AME-4-I: 6" or 10" long x 6" tall x 2" wide

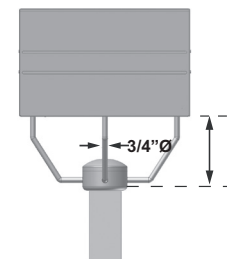
Cast Wall Plate



*For use with standard Bolt-On-Arm

BWP: 10" tall x 6½" wide








Spider Mount Detail



*Fits 2 3/8" O.D.

AME-2-I: 8.89" tall
AME-4-I: 11.5" tall

EPA Data

Fixture with Arm							
	2.2	4.0	4.4	6.0	5.1	7.1	Spider Mount
AME-2-I	2.2	4.0	4.4	6.0	5.1	7.1	2.6
AME-4-I	3.4	6.2	6.8	9.2	7.8	10.9	3.9