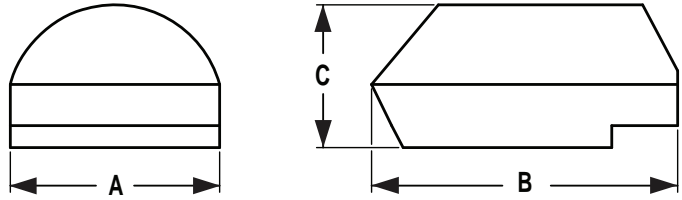


Advantage HID—TENNIS/SPORTS

Project Name	Type
Catalog Number	



Dimensional Drawings



Fixture	A	B	C	Max. Watts	Lbs
ADV-2	23"	32"	15"	1000 W	67

The **Advantage** luminaire features a unique contemporary design inspired by the sleek styling of a European sports car. Vision™ is a patented, revolutionary new reflector system unlike any other. The flat lens, vertical lamp, IES full cutoff luminaire is Dark-Sky certified to restrict light trespass, glare and light pollution for neighborhood friendly outdoor lighting.

The low-profile, aerodynamic-shaped housing is complimented with a uniquely styled mounting arm. A durable polyester powder coat finish is standard in a selection of architectural colors to enhance any application. Computerized precision machinery and quality materials ensure manufacturing to the highest industry standards.

Advantage is available in one size and one distribution pattern, including a special forward throw T4T reflector for tennis and other sport applications. Vision™ Reflector System allows the use of fewer fixtures and poles with wider spacings, providing substantial equipment, installation and energy cost savings.

Advantage offers a selection of Pulse Start and Metal Halide lamps from 400 through 1000 watts.

Model	Optics	Wattage	Source	Voltage	Mounting	Finish	Options
ADV-2 Flat Glass	Tennis (T4T)	400 (400)	PS	120 (1)	Slip Fit Arm (SFA)	Tennis Green (GN)	4-Sided Light Shield (4SS)
		450 Reduced envelope (450)	PS	208 (2)	Davit Arm (DA)	Black (BK)	Back Shield (BS)
		750 (750)	PS	240 (3)	Adjustable Knuckle Mount (KM)		Bird-B-Gone (BBG)
		875 (875)	PS	277 (4)			
		1000 (1000)	MH, PS (M), (P)	480 (5)			
						M-Tap *Multi-Tap ballast wired at 277 V unless specified (6)	
				347 (8)			

MH - Metal Halide
PS - Pulse Start Metal Halide

*Davit arm must be ordered with a Davit bracket. See Mounting Arms section.

For more detailed information on mounting, wiring or installation instructions, please consult factory. If poles are not ordered with fixtures, please specify mounting requirements. This document contains proprietary information of Visionaire Lighting, LLC. Any use of this information requires the written approval of Visionaire Lighting, LLC. In keeping with our TQM policy of continuous improvement, Visionaire reserves the right to change any specifications contained herein without prior notice.



19645 Rancho Way • Rancho Dominguez, CA • 90220
Tel: (310) 512-6480 • Fax: (310) 512-6486
www.visionairelighting.com

Advantage HID—TENNIS/SPORTS

Housing

- All housings are manufactured using technologically advanced computer numerical control (CNC) machinery. Precision sheared and formed, corrosion-resistant aluminum.
- The computerized CNC machinery enables all **Advantage** housings to be constructed quickly, efficiently and in adherence with exacting ISO 9002 standards. All external hardware is stainless steel.

Lens and Door Assembly

- Removable door assembly is CNC precision, sheared and formed from corrosion-resistant aluminum, with captive stainless steel fasteners.
- The lens is a tempered, clear safety glass, secured by galvanized lens retainers, and sealed with silicone gasketing to provide complete weather and insect protection.

Vision™ Optical System

- Reflector is precision CNC cut and bent, multifaceted, segmented, highly efficient, 95% reflective aluminum. Available in a specialized T4T tennis reflector.
- Tool-less reflector entry.

Quali-Guard® Finish

- The finish is a Quali-Guard® textured, chemically pretreated through a multiple stage washer, electrostatically applied, thermoset polyester powder coat finish, with a minimum of 3-5 millimeter thickness. Finish is oven-baked at 400 °F to promote maximum adherence and finish hardness. All finishes are available in standard and custom colors.
- Finish is guaranteed for two (2) years.

Mounting

- Slip fit arm mount (SFA), davit arm (DA) or knuckle mount (KM) available.
- Please see Mounting Arms section for a choice of tennis davit arm options, brackets and accessories.

Electrical Assembly

- All ballasts are premium-grade HPF regulating autotransformers. Ballast is capable of providing consistent lamp starting down to -20 °F. Available in:
 - Metal Halide (MH)
 - Pulse Start Metal Halide (PS)
- Socket is glazed porcelain medium or mogul base with nickel-plated contacts, rated at 4 kV (5 kV for 1000 watt) and 600 V.

Options

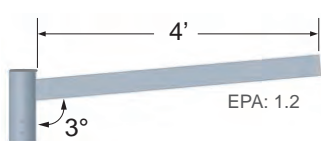
- 4-Sided light shield
- Back shield
- Bird-B-Gone

Please consult factory for custom options.

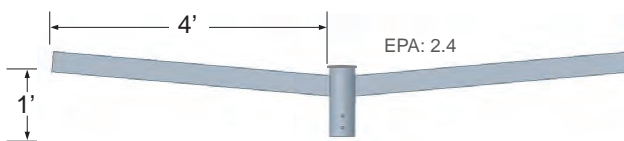
Listings

- **Advantage** is  listed, suitable for wet locations.
- Dark-Sky Friendly®, full cutoff certified by the International Dark-Sky Association.
-  compliant.
- Powder Coated Tough™ 
- Vision™ Reflector System (U.S. Patent No. 7,213,948).

Slip-Fit Mounting Arms



TNS100-S1



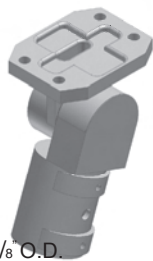
TNS100-D2



TNS103 Davit Arm

*Tennis mounting arms slip-fit over tenons or poles, available in single, double 180°, D90, D70, and quad.
*Davit arm must be ordered with a Davit bracket. See Mounting Arms section.

Adjustable Knuckle Mount



Slip fits over 2 3/8" O.D.

EPA Data

Fixture with Arm

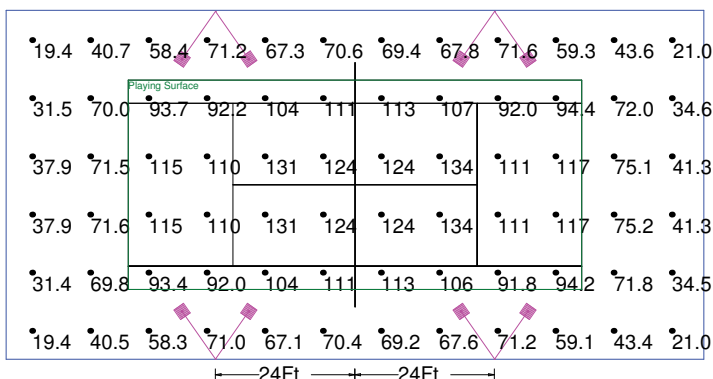


ADV-2

1.9

Tennis Court Typical

SINGLE COURT 60X120



19645 Rancho Way • Rancho Dominguez, CA • 90220
Tel: (310) 512-6480 • Fax: (310) 512-6486
www.visionairelighting.com