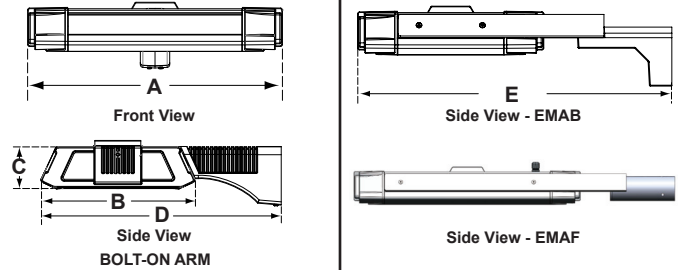


Element II LED

Project Name	Type
Catalog Number	



Dimensional Drawings



Fixture	A	B	C	D	E	Max. LEDs	Lbs
EL2-1	18"	14½"	4"	21½"	18"	96	34
EL2-2	24"	14½"	4"	21½"	36"	144	38
EL2-3	32"	14½"	4"	21½"	44"	144	45
EL2-4	42"	14½"	4"	21½"	54"	192	62
EL2-5	46"	14½"	4"	21½"	58"	288	68

The **Element II** is a modularly-designed area luminaire that maximizes our latest **Evolution C LED** technology. Available in four sizes, it offers from 28 to 336 watts of LED lighting. The **Element II** masters the art of efficient heat dissipation and electronic driver protection. It maximizes optics control; and features a wide array of energy and security options for optimal efficiency and safety.

The range of housing sizes is accomplished by utilizing a heavy-duty, extruded aluminum body, with heat radiating fins for cutting edge thermal management.

Removable die-cast aluminum end caps allow for easy driver access. A shielded, perforated top cover – beneath a protective debris guard – completes the construction of this innovative, long-life LED luminaire.

The standard finish on the **Element II** is a thermoset polyester powder coat painted finish in standard and custom colors.

The **Element II** utilizes our latest high-performance **Evolution C LED** light engine; to provide IES Types I, II, II-R, III, IV, IV-A, V, and V-W distribution patterns. The **Element II** qualifies as an IES full cutoff fixture; and is Dark-Sky certified to restrict light trespass, glare and light pollution for neighborhood-friendly lighting.

The **Element II**'s excellent thermal management rating results in increased lumen output; as well as a life estimate of between 100,000 to 150,000 hours. Control systems may extend the life of the **Element II** and further reduce maintenance costs. See LED Data Chart for more information.

Model	Optics	Source	Milliamps	Kelvin	Voltage	Mounting	Finish	Options
EL2-1	Type I (T1)	# of LEDs 24 (24LC) 48 (48LC)	mA 350 530 350 530	4000K (4K) 5500K (55K)	120-277 *Universal voltage (UNV)	Bolt-On Arm (BOA)	White (WH)	Photocell & Receptacle *Specify voltage (PCR120) (PCR208) (PCR240) (PCR277)
	Type II (T2)	72 (72LC) 96 (96LC)	350 530 350 530 (3) (5)		480 (5) 347 (8)	Wall Mount (WM) *Includes Cast Wall Plate	Bronze (BZ) Black (BK)	Photo Receptacle (PER) *With shorting cap
	Type II-R (T2R)	120 (120LC) 144 (144LC)	350 350 (3)			Knuckle Mount (KM)	Grey (GY)	Button Type Photocell *Specify voltage (PC120) (PC208) (PC240) (PC277)
EL2-2	Type III (T3)	120 (120LC) 144 (144LC)	530 530 (5)			Mast Arm Fitter (MAF)	Silver Metallic (SL)	Round Pole Plate Adaptor For 4"Ø Pole (RPP4) For 5"Ø Pole (RPP5)
	Type IV (T4)	120 (120LC) 144 (144LC)	530 530 (5)			End Mount Bolt-On (EMAB)	Custom Color (CC)	Element Conduit Box (ECB)
EL2-3	Type IV-A (T4A)	168 (168LC) 192 (192LC)	350 530 350 530 (3) (5)			End Mount Bolt-On (EMAB)		Cutoff Louver System (CLS)
	Type V (T5)	216 (216LC) 240 (240LC) 264 (264LC) 288 (288LC)	350 350 350 350 (3)			End Mount (EMAF) *Requires 2-3/8" horizontal tenon		Vandal Resistant Shield (VRS)
EL2-4 *EMAF only	Type V-W (T5W)	216 (216LC) 240 (240LC) 264 (264LC) 288 (288LC)	350 350 350 350 (3)				Dual Circuit (DC)	
EL2-5 *EMAF only							Motion Sensor (MS)	
								Dimming/Controls *Consult factory

For more detailed information on mounting, wiring or installation instructions, please consult factory. If poles are not ordered with fixtures, please specify mounting requirements. This document contains proprietary information of Visionaire Lighting, LLC. Any use of this information requires the written approval of Visionaire Lighting, LLC. In keeping with our TQM policy of continuous improvement, Visionaire reserves the right to change any specifications contained herein without prior notice.



19645 Rancho Way • Rancho Dominguez, CA • 90220
Tel: (310) 512-6480 • Fax: (310) 512-6486
www.visionairelighting.com

Housing

- The fixture housing is heavy-duty, extruded aluminum, with heat radiating fins. A perforated aluminum top cover protects the heat radiating fins from contaminants and directs constant air flow over them for maximum cooling.
- The fixture end caps are die-cast aluminum and easily removable with captive fasteners for easy access to the LED drivers which are housed within the end-caps for cool operation.
- Silicone gasketing is utilized throughout the fixture for weathertight operation.

Thermal Management

- The **Element II** provides excellent overall thermal management by maximizing the fixture's heat sink efficiency. This enables the **Element II** to withstand higher ambient temperatures and drive currents without degrading LED life. The **Element II** has a low thermal resistance rating. The heat radiating fins and perforated fixture components (see Thermal Convection Heat Management System cutaway below) create superior thermal management results.
- The L70 test determines the point in an LEDs life when it reaches 70 percent of its initial output. The **Element II** series LEDs have been determined to last 150,000+ hours in 40 °C environments when driven at 350 mA. See LED Data Chart for additional test results.

Optical System

- The highest lumen output, **Evo/C LEDr** are utilized in the **Element II** series. IES distribution Types I, II, II-R, III, IV, IV-A, V, and V-W are available. LED light assemblies come in multiples of 24 (minimum 24 to maximum 288 LEDs) and are field replaceable. The optical system qualifies as IES full cutoff; and is Dark-Sky certified to restrict light trespass, glare and light pollution.
- CRI values are 70 for 4000K and 75 for 5500K.

Quali-Guard® Finish

- A Quali-Guard® thermoset polyester powder coat painted finish is available in four standard finishes and custom colors.

Mounting

- The **Element II** is available with multiple mounting options. The cast aluminum Bolt-on Arm (BOA) is pre-mounted to the fixture and a Quick Mount pole adaptor is shipped installed on a Visionaire Pole. Also available is an End Mount (EMAB) version utilizing the same Quick Mount pole adaptor for a bolt-on application. For the larger size 4 & 5 fixtures; For the larger size 4 & 5 fixtures; a 2% horizontal round fitter is used for added stability.

Electrical Assembly

- The **Element II** is supplied with a choice of 350 or 530 mA high-performance LED drivers that accept 120v thru 480v, 50 Hz to 60 Hz, input. Power factor of 90%. Rated for -40 °C operations.
- 2 kV surge protector supplied as standard.

Warranty

- Five (5) year Limited Warranty on entire system, including finish. For full warranty information, please visit VisionaireLighting.com.

Options

- Photocell & receptacle
- Photo receptacle
- Button type photocell
- Round pole plate adaptor
- Element conduit box
- Cutoff louver system
- Vandal-resistant shield
- Dual circuit
- Motion sensor
- Dimming/Controls



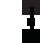



Please consult factory for custom options and available upgrades

Listings

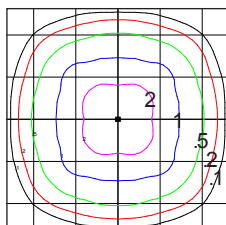
- **Element II** is  listed, suitable for wet locations.
- LM79 and LM80. • RoHS compliant.
- Dark-Sky Friendly®, full cutoff certified by the International Dark-Sky Association.
- Meets ANSI 2GC136.31-2001 Vibration Standards when ordered with the MAF mounting option.
- IP65 listed.
- DLC listed.
- Powder Coated Tough™ 



EPA Data

Fixture with Arm						
EL2-1 *with bolt-on arm	.7	.9	1.3	1.2	1.2	1.2
EL2-2 *with bolt-on arm	.8	1.0	1.3	1.4	1.4	1.4
EL2-3 *with end mount	.9	1.2	1.3	1.5	1.5	1.5
EL2-4 *with end mount	1.2	1.6	2.4	2.6	2.6	2.7
EL2-5 *with end mount	1.3	1.7	2.3	2.7	2.6	2.7

Isolux Curve



ELEMENT II - SIZE 3
TYPE 5W
LED OPTICS
192 LEDs @ 350 mA

Scale: 1 Square = 30 ft
Initial Light Loss Factor = 1.00
Total Lumens Per Luminaire = 19,712
Mounting Height = 20 ft
Arrangement: Single

LED Data Chart for 5500K*

# Bars	# LEDs	Output mA	Initial Lumens T1	Initial Lumens T2	Initial Lumens T3	Initial Lumens T4	Initial Lumens T5W	System Watts 120-277	L ₇₀ Hours @ 40° C
1 EL2-1	24	350	2,263	2,362	2,250	2,262	2,380	28	150,000
		530	2,520	2,841	2,776	2,684	3,047	38	100,000
2 EL2-1	48	350	4,526	4,724	4,501	4,525	4,760	56	150,000
		530	5,042	5,683	5,553	5,368	6,094	76	100,000
3 EL2-1	72	350	6,789	7,086	6,483	6,786	7,140	84	150,000
		530	7,563	8,524	8,330	8,052	9,141	114	100,000
4 EL2-1	96	350	9,052	9,448	8,645	9,048	9,520	112	150,000
		530	9,923	11,365	11,107	10,736	12,188	152	100,000
5 EL2-2	120	350	11,315	11,810	10,212	11,310	11,900	140	150,000
5 EL2-3	120	530	12,405	14,207	13,884	13,440	15,235	190	100,000
6 EL2-2	144	350	13,588	14,172	12,255	13,572	14,280	168	150,000
6 EL2-3	144	530	14,885	17,048	15,260	16,128	18,816	228	100,000
7 EL2-4	168	350	15,841	16,534	14,297	15,834	16,640	196	150,000
		530	17,367	19,890	17,803	18,788	21,818	266	100,000
8 EL2-4	192	350	18,105	18,896	16,341	18,096	19,040	224	150,000
		530	19,847	22,780	20,000	21,472	24,366	304	100,000
9 EL2-5	216	350	20,367	21,258	20,560	20,358	21,420	252	150,000
10 EL2-5	240	350	22,630	23,620	22,600	22,620	23,800	280	150,000
11 EL2-5	264	350	24,893	25,982	24,640	24,882	26,180	308	150,000
12 EL2-5	288	350	27,176	28,344	26,680	27,144	28,560	336	150,000

Visit www.VisionaireLighting.com for up-to-the-minute chart information, including types not listed here.
* For 4000K multiply values by 0.97